

CODESIGN POLICY PARTNERSHIP

Highest & Best Use

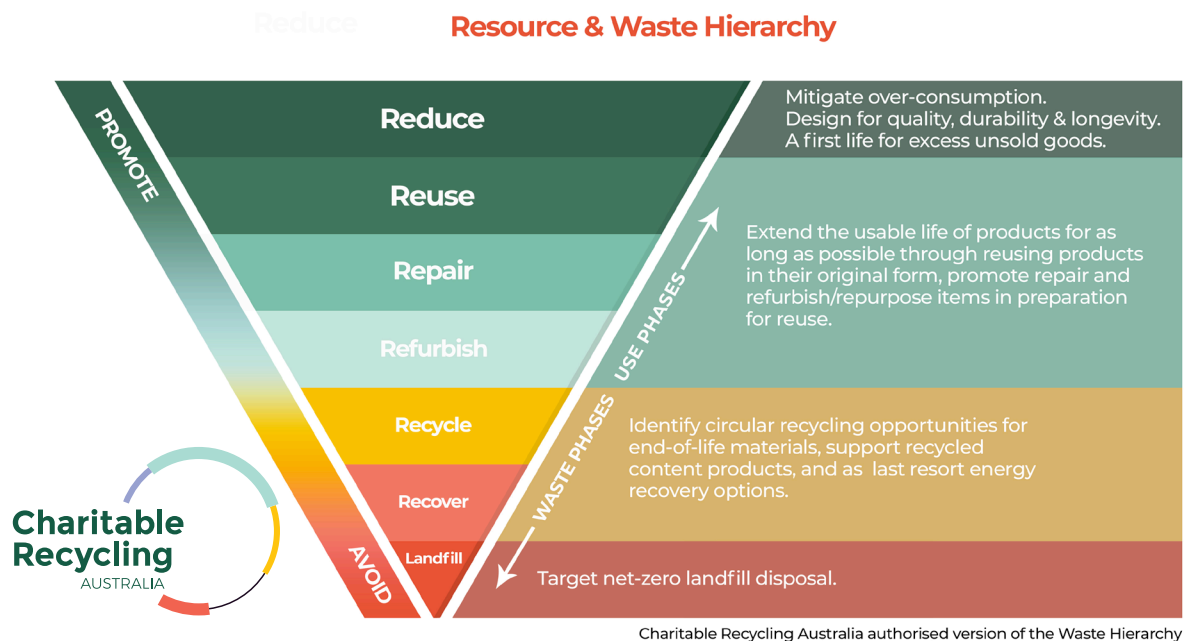


Strengthening the Circular Economy by accelerating first use, reuse and repair.

Our Objectives

As a collaboration of charities, social enterprises, councils, commercial organisations and academia, representing the top layers of the Resource and Waste Hierarchy (see below) our goal is to strengthen the circular economy by accelerating First Use, Reuse and Repair. We want to:

- Collaborate with Australian governments on the codesign of policy to accelerate highest and best use for maximum environmental, social and economic impact.
- Support organisations that are enabling the first use, reuse and repair of goods operating with circular economy principles, in order to help scale their impact.
- Deliver Government circular economy and resource management targets faster and more effectively.



Highest and Best Use in Australia requires policy, programs and funding support. In collaboration with governments we hope to:

- Codesign an effective funding scheme for First Use, Reuse and Repair - linked to government policies, programs and targets
- Fast-track the transition to a Circular Economy by 2030 to deliver maximum environmental, social and economic benefit.

Policy Considerations to Strengthen Circular Economy Impact by 2030

These are some of the initiatives for consideration to support the achievement of our objectives:

- Funding to gather data to populate Monash University's National Reuse Measurement Guidelines which will enable a standardised approach to collecting, interpreting and reporting on reuse impact data.
- Easy-access specific government grants for reuse and repair organisations.
- Training and upskilling support for the job creation of people facing barriers.
- Easily accessible repair hubs for communities within their council areas.
- Incentives to support collections of reusable clothing and household item, through increased donation hub sites, logistics, transport and warehousing.
- Incentives to support manual and automated sorting to maximise highest and best use.
- Funding for physical space and manpower, including wage subsidies, to scale preparation for reuse and maximise waste diversion.
- Financial incentives to design out waste, and support reuse and repair.
- Education on circularity and citizen-activation of stewardship of resources, and the promotion of reuse and repair language and values.
- Business tax incentives to encourage donations of clothing and household items, expanding on the proposed tax incentive for food relief.

Evidence and Business Case Development

- Data to inform all decision making and accountability through measurable targets.
- Economic analysis to inform best practice modelling and scenarios.
- Systems approach for wholistic benefits and the avoidance of unintended consequences.
- Alignment with Federal and State Governments targets.



Cross Sector Partners

